



Corporate Social Responsibility

Version No. 01/2014

Effective Date: 1st April, 2014

Table of Contents

S.No.	Title	Page
1	Objective/Vision/Applicability	03
2	Fund Allocation	04
3	Activities under CSR	04-05
4	Institutional Setup	05-06
5	Implementation of the programs	06
6	Monitoring & Review (Annex. – 1)	06-07
7	General Information	07
8	Annexure – 1	08

8.1 Objective

Our corporate social responsibility policy is committed to achieve the goals of sustainable development by integrating economic, environmental and social imperatives, which recognizes the interests for all its stakeholders & enhances the goodwill of the Company.

It ensures complying with the programs that are for the upliftment of the society, socially and environmentally, enhancing the quality of life and economic well-being of the deprived and under-privileged.

8.2 Vision

The philosophy of Mankind Group is “Serving Life” by providing quality products at affordable prices to the society. In line with the company philosophy, our CSR vision endeavor’s to provide the best services to the society with the commitment that “We Are There to Care” and subsequently promoting the sustainable growth for the society where it operates.

8.3 Applicability

This policy is applicable to all CSR programs and initiatives taken place in the neighboring places where Mankind operates to benefit the destitutes prevailing in the society & acts as a responsible Corporate Citizen.

8.4 Definition

Corporate Social Responsibility (CSR) - *Corporate Social Responsibility is the continuing commitment by business to behave ethically and contribute to economic development while improving the quality of life of the workforce and their families as well as of the local community and society at large*

8.5 Fund Allocation

- Allocation of fund will be done keeping align with the objective of the CSR policy and in accordance with the rules and regulations of the government time to time
- The company will ensure that it spends in every financial year, at least 2% of the average Net profits of the company made during the three immediately preceding financial years.
- The CSR budget will be allocated after taking into account the recommendations of the CSR Committee and considering the nature of activities and programs.
- It will be earmarked towards the need identification, assessing the impact studies along with the sponsorship of CSR activities and advertisements.
- Any unutilized CSR allocation of a particular year, will be carried forward to the following year, i.e., the CSR budget will be non-lapsable in nature.

8.6 Activities under Corporate Social Responsibility

Mankind considers practicing its corporate values through its commitment to grow in a socially and environmentally responsible way, while meeting the interests of its stakeholders. Therefore, the arenas of activities that will be considered are listed hereby:-

- a. Promoting healthcare including preventive health care practices, sanitation and providing safe drinking water and eradicating hunger, poverty, malnutrition;
- b. Directing actions towards different aspects of education - including special education, employment enhancing vocation skills especially among children, women, elderly and the differently abled and livelihood enhancement projects;
- c. Promoting gender equality, empowering women, setting up homes and hostels for women and orphans; setting up old age homes, day care centres and such other facilities for senior citizens and measures for reducing inequalities faced by socially and economically backward groups.

- d. Conservation of natural resources, Ensuring environmental sustainability, protection of flora and fauna, animal welfare;
- e. Protection of national heritage, art and culture, setting up public libraries and promotion & development of traditional art and handicrafts;
- f. Encouraging rural participation in Sports specifically nationally recognized sports, Paralympic sports and Olympic sports;
- g. Contribution to the Prime Minister's National Relief Fund or any other Trust set up by the Central Government for socio-economic development and relief & welfare of the Scheduled Castes, the Scheduled Tribes , other backward classes, minorities and women;
- h. Contribution or Funds provided to technology incubators located within academic institutions which are approved by the Central Government;
- i. Rural development projects
- j. Encampment, to spread awareness about mineral deficiency in bones as per the weight-height ratio by conducting BMD camps on a regular basis. It also conducts camps for Neuropathy to increase awareness about damage affecting nerves and HB (Haemoglobin) – to keep a check of iron deficiency.

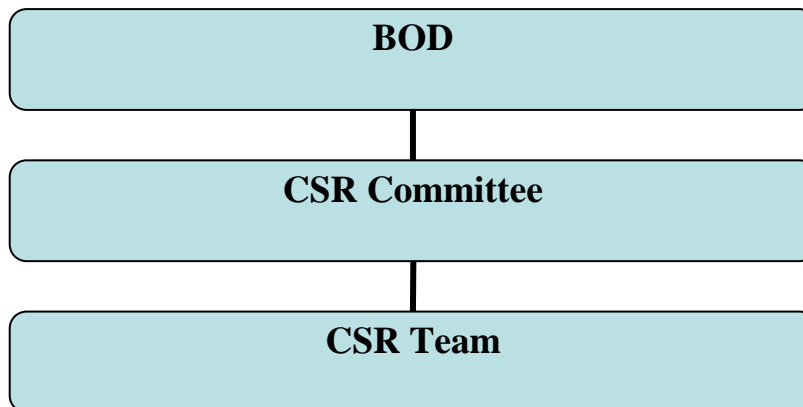
8.7 Institutional Setup under Corporate Social Responsibility

In Mankind, we have duly constituted a CSR Committee comprising of three or more Directors. The CSR Committee will set directions for corporate social responsibilities, and will ensure the overall responsibility. However, the Committee for the effective planning and implementation constituted a CSR Team, which includes head of relevant function, and members of corporate office.

The CSR Team at the beginning of each financial will be taking care of the requirements to identify the activities & drive those activities at the beginning of each financial year with due

recommendations of the CSR Committee to ensure company philosophy is followed in every step.

The three teams under the **CSR Committee – BOD (3 Directors)** are as follows:



8.8 Implementation of the Programs

- The focus of the CSR activities as conducted by Mankind Pharma shall be within the list of activities specified in **clause 8.6** of the Corporate Social Responsibility Policy.
- Continue to promote and build partnership with NGOs towards implementation of our social activities towards the betterment of the society.
- Continually encourage and facilitate employees to contribute to society and environment development.
- Comply with all relevant laws and regulations, and strive to meet the standards as per section 135 of the Companies Act, 2013.
- The time duration over which a particular programme will be spread, will depend on its nature, extent of coverage and the intended impact of the programs.

8.9 Monitoring and Review

- The CSR Team shall ensure timely execution of the scheduled activities as per the laid standards.

- CSR Team shall obtain feedback from the beneficiaries of the programs and the associated NGOs/Agency.
- Appropriate documentation of CSR Policies, activities and expenditure entailed will be undertaken on a regular basis
- CSR initiatives of the company will also be reported in the Annual Report (**refer enclosed Annexure – 1**) of the company

8.10 General

- In case of any doubt with regard to the provision of the policy and also in respect of matters not covered herein, a reference to be made to Corporate CSR Team. In all such matters, the interpretation & decision of the Management shall be final.
- Any or all provisions of the CSR Policy would be subject to revision/amendment in accordance with the guidelines on the subject as may be issued from Government from time to time.
- The Company reserves the right to modify, cancel, add or amend any of the above mentioned in accordance with the Act & rules applicable from time to time.

ANNEXURE - 1

(1)	(2)	(3)	(4)
S.No.	CSR Program	Sector in which the program is covered	Programs (1) Local Area or other (2) Specify the State and district where the programs were undertaken
1			
2			
3			
4			
5			
	TOTAL		
Sd/- (Chief Executive Officer or Managing Director or Director) Sd/- (Chairman CSR Committee)			Sd/- (Chairman CSR Committee)